

Orford Golf Club - Emergency plan

Scope and application

There are a number of emergency events that could occur that would impact on the Golf Club. These include injuries and medical events, structural fires, (eg kitchen), gas leaks, floods, bushfires, chemical spills, extreme weather events, fallen trees, electrical outages, pandemics. Each emergency will be different, and it is important to tailor the response to meet the nature and extent of the emergency.

Emergency contacts

Keep up to date during disaster events at www.alert.tas.gov.au and ABC local radio and website www.abc.net.au

Contact	Situation	Contact details
Fire/police/ambulance	Life-threatening emergencies	000
State Emergency Services (SES)	Flood and storm assistance	132 500
Police	Non-emergency	131-444
Fire	Non-emergency	1800 000 699
Ambulance	Non-emergency	1800 008 008
Poison information centre	National information line	131 126
Weather and warnings	Bureau of Meteorology	www.bom.gov.au/tas
Tasmania Police	Road condition/closure	www.police.tas.gov.au
TasNetworks	Report fallen power lines Current outages	132 004 www.tasnetworks.com.au
Telstra	Faults & damage Current outages	132 203 https://outages.telstra.com.au/#/
TasWater	Service interruptions information Report issues / emergency assistance	www.taswater.com.au 136 992
COVID-19 Public Health Hotline		1800 671 738

Orford Golf Club - Emergency plan

Golf Club Contacts

Clubhouse		6257 1249
President	John Smith	0419 344 094
Vice-President	Beth Batchelor	0439 573 423
Captain	Jordan Woods	0419 331 439
Ladies' Captain	Libby Brown	0417 105 379
Greenkeeper	Stephen Crosswell	0437 957 458
Security firm	Tas Monitoring Service	03 6339 3000

Evacuation procedures

In the event of an Emergency in the main Clubhouse area the following procedures are to be applied:

1. Emergency services (Police, Fire & Ambulance) to be notified immediately and advised of the type of emergency.
2. The Duty Barperson and or the Club President or his nominee are to direct all members and guest in the Clubhouse to evacuate via the nearest Exit and directed to proceed to the nominated Assembly Point in the Carpark at the end of the Buggy Shed.
3. All offices and Rest Rooms are to be checked and any persons located to be asked to leave immediately.
4. All gas lines to be turned off at gas cylinders.
5. The Duty Barperson and or Club President to report to Emergency Service Personnel to report the Clubhouse is empty and all members and guests are accounted for.
6. At the end of the Emergency the Clubhouse Siren will be activated as an "All Clear sign"

See attached Emergency Procedures and Evacuation Plan.

Reviewing, reporting and record-keeping

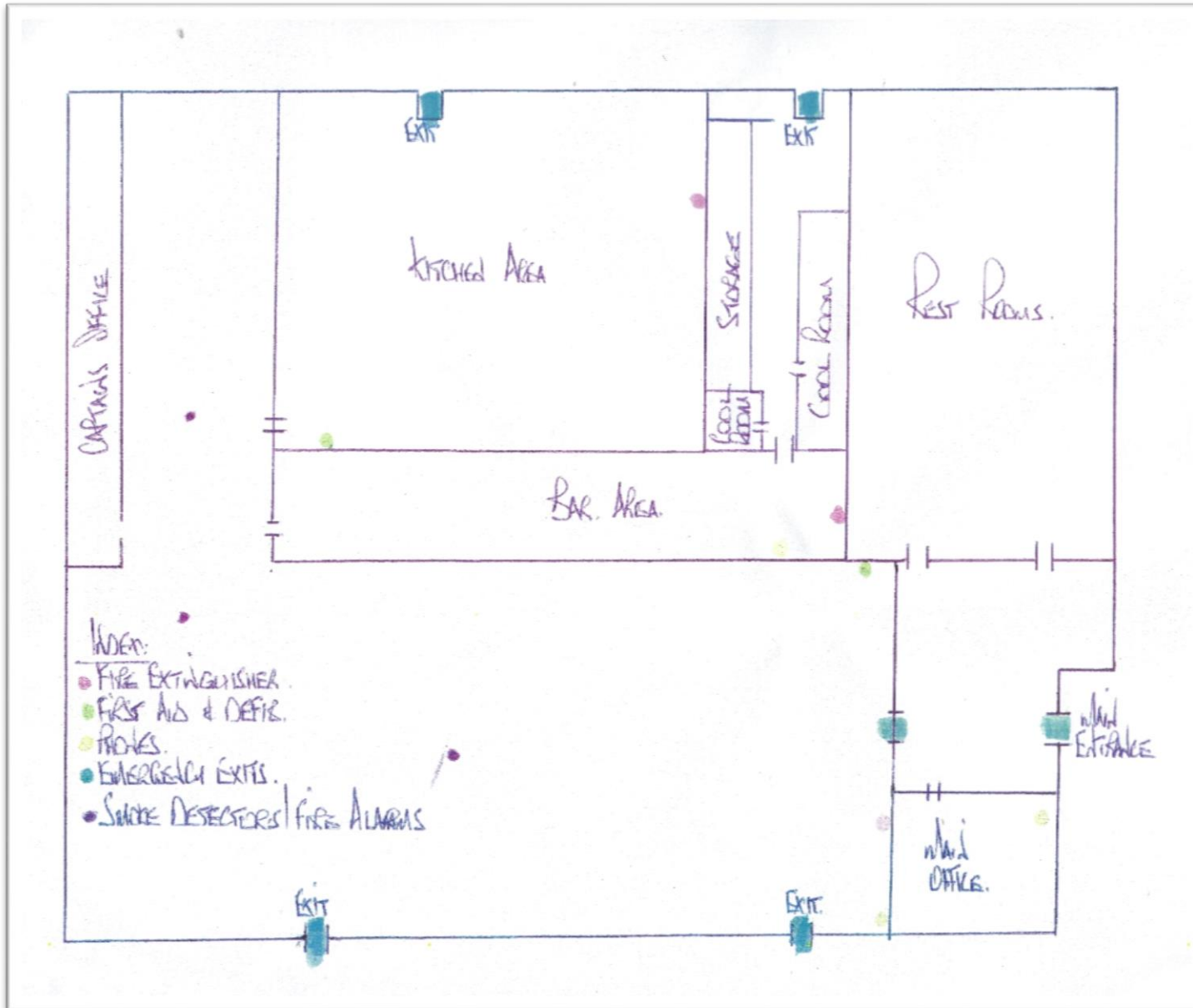
This plan will be reviewed annually by the OH&S Sub-Committee and a report provided to the Committee on any changes necessary. Following any emergency event, the OH&S Committee should undertake a review of the response and make any recommendations on changes to the Plan to the Committee.

Orford Golf Club - Emergency plan

Emergency procedures

FIRE AND SMOKE	<p>R – Remove – move away from immediate danger</p> <p>A – Alert – call emergency services on 000</p> <p>C – Confine – close doors and windows</p> <p>E – Extinguish – use fire equipment to put out or control the fire – but only if safe to do so</p>
CLUBHOUSE EVACUATION	<ol style="list-style-type: none"> 1. Alarm raised and contact relevant emergency services 2. Wait for evacuation signal. 3. Follow instructions 4. Calmly evacuate the premises from nearest emergency exit. 5. Arrive at evacuation location – carpark adjacent to buggy shed 6. Locate and account for all members, visitors and staff.
BUSHFIRE	<ol style="list-style-type: none"> 1. Follow the instructions of Emergency Services 2. Close course and clubrooms if instructed 3. Provide directions to Emergency Services to dam and other water outlets
INJURY / MEDICAL INCIDENT	<ol style="list-style-type: none"> 1. Call relevant emergency services 2. Direct ambulance to nearest point of access 3. Someone stay with the injured person 4. Identify trained first aid officer or member with medical training 5. Send for defibrillator and first aid kit from Clubrooms if needed
EXTREME WEATHER EVENT	<ol style="list-style-type: none"> 1. Stop play immediately the siren sounds, mark your ball and remove yourself from the course 2. Obey all instructions from the Captain or their representative 3. Do not go back on the course until advised to do so 4. The decision of the Captain or their representative is final

Clubhouse Evacuation Plan



Remove yourself and others from the immediate danger

Alert others and call 000

Confine smoke and fire – close doors and windows

Evacuate yourself and others from the immediate danger and extinguish fire if safe to do so

Evacuation Point:
Car park near buggy shed